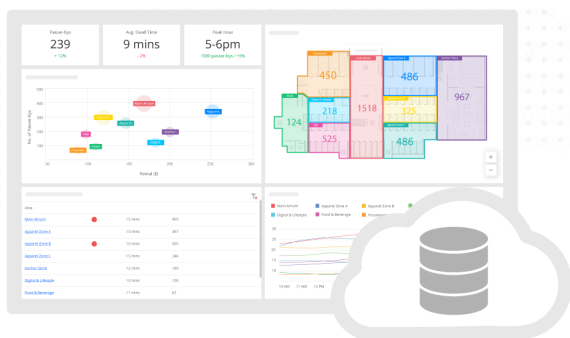


Centrally Managed System

Analytics Manager V9™



Product Code: FC-FAM01

PROVIDE FULL ANALYSIS OF TRAFFIC DATA

- Visitor Entering and Exit at the Entrance
- Sales Conversion
- Queue Counting
- Heatmap Reporting
- Area Traffic Flow
- Room, Area and Floor Occupancy
- Occupancy Prediction
- Other Wi-Fi metrics like passerby Visit Duration, Returning Customer and etc

PRE-DEFINED DASHBOARD AND REPORT SET

- Company Level Space Occupancy
- Building Utilisation and Portfolio Dashboard
- Live Checkout Prediction Dashboard
- Store Performance Dashboard and Store Report
- Space Utilisation Live and Historical Dashboard
- Hourly Group Counting Dashboard
- Post Event Evaluation Dashboard
- Area Queue Length Dashboard
- Nationwide Management
- Queue Management Dashboard
- Checkout Performance Dashboard
- Floor Level Space Utilisation Report
- Facility Management Report

KEY FEATURES

- Unlimited Devices, Area, and Sites
- High Scalability User Account Management
- Automated Email Scheduler and Notification Alerts
- API available for Data Integration for BI and ePos
- System Health Check Report
- Device Proactive Monitoring

KEY SPECIFICATION

Compatible Browser	Mozilla Firefox or Later Chrome Version 4.0 or Later Safari
User Level	Multiple user group hierarchy based on user configuration
Time	NTP, Adjustable time zone, automatic daylight saving adjustments
Data Delivery	TCP/IP
Database Type	Microsoft SQL/ Maria DB/ Druid / Postgres
Report Format	.csv, .xml, .txt, .pdf
Data Storage	5 Years storage with auto sync
Data Backup	Yes
Backup Frequency	Daily Full Backup for Data and Configuration File Weekly Backup to Sub Server for Contingency Purpose
Software Update	Auto upgrade

MINIMUM SERVER REQUIREMENT (PRIMARY SERVER) **

Operation System	Window Server 2016 or above
Storage	500GB to 2TB support up to 2000 Devices *
Processor	3.5 GHz (64-bit Processor) with 16 Cores *
Physical Memory	From 32 GB up to 128 GB *
Networking	100Mb Ethernet Connection or above
Web Server	Internet Information System (IIS) 7.0 and above
Microsoft.NET Framework Version	4.0 and above
Database	MS SQL Server 2016 or above

MINIMUM SERVER REQUIREMENT (SECONDARY SERVER) **

Operation System	Ubuntu Server 20.04 (LTS) or above
Storage	1TB to 3TB support up to 2000 Devices *
Processor	3.5 GHz (64-bit Processor) with 16 Cores *
Physical Memory	From 64 GB up to 256 GB *
Networking	100Mb Ethernet Connection or above
Database	MySQL Server

* For Type-A, Large Configuration. For more info about the server(s) hardware requirements, please visit [On Premise Hosting \(https://www.footfallcam.com/people-counting/knowledge-base/chapter-26-hosting-solution-on-on-premise-server/\)](https://www.footfallcam.com/people-counting/knowledge-base/chapter-26-hosting-solution-on-on-premise-server/).

** Both servers are mandatory to enable all features included in FootfallCam Analytic Manager V9.

Do you need further information or have a question? Please visit www.footfallcam.com

©2002-2023 Footfall counter is trademark application of FootfallCam in various jurisdictions. We reserve the right to introduce modifications without notice. All other company names and products are trademarks of their respective companies.

FOOTFALLCAM ANALYTIC MANAGER V9™ SERVER OPTIONS

	FootfallCam Cloud Server	Install at Client's Server(s)
Descriptions	Software and data stored at the FootfallCam hosted server. The retailer is able to access via web browser with a secured password or login account.	Software and data are stored at the retailer's own corporate server. The retailer will be given full access to the software which has the same function as cloud-based software.
Software Core Feature		
Max Number of Devices	Unlimited	Support up to 2000 devices with 2TB storage **
Analytics and Reports	Yes	Yes
Email Scheduler	Yes	Yes
Compare data by store, by time and by different metrics	Yes	Yes
Custom Dashboard created by user	Yes	Yes
User Account Management	Yes	Yes
Health Check Reports	Yes	Yes
Accuracy Audit Function	Yes	Yes
Sales Data/ POS Integration	Yes	Yes
Data Export in .csv, pdf, .txt and excel format	Yes	Yes
Counter and Branch Management	Yes	Yes
Multi Language	Yes	Yes
Remote Access to the counter	Yes	Yes, provided the device is within the same network
Firmware Upgrade	Automate	Automate, however customer able to control the quantity upgrade per day
Software upgrade	Automate	Automate
Backup and Security Protection		
Data backup	Automate daily backup in cloud server	Backup function available for retailer to set up your own backup
Configuration setting backup	Automate daily backup in cloud server and client's server	Automate daily backup
Contingency backup	Weekly backup to sub server	Not Available
Data Protection	Yes	Yes