

## Patron Counting for Small Libraries

Recommended for libraries looking for cost effective and reliable people counters

### LIBRARY REQUIREMENTS

- Counting accuracy > 95%
- Cost effective. Reliable.
- Reporting software that can be operated by librarians.
- Can be installed by your installers or ours.
- Fully supported by a local company
- [Case Studies >>](#)

### DEPLOYMENT

- **One Counting device at the entrance** - Device mounted on the ceiling of the entrance. One ethernet cable connects from device to router. ([Sample Floor Plans](#))

### SYSTEM DESIGN

#### Equipment:

- [FootfallCam 3D Pro2](#) - 3D stereo vision people counter.
- [FootfallCam V9 Cloud](#) - Reporting Software

#### Metrics:

- [Patron Count \(In/Out\)](#), Live Occupancy, [Dwell Time](#), [Children Counting](#)

#### Use Cases:

- **Directors:** [Portfolio Overview](#), [Traffic Analysis Report](#)
- **Managers:** [Patrons Analytics Dashboard](#), [Event Effectiveness Report](#)
- **Patrons:** [Live Occupancy Tracker](#) on your website
- [Explore more >>](#)

#### Maintainability:

- Dedicated Account Manager
- Self Support: [Health Check](#), [Support Helpdesk](#)
- Support Contract: [Support Contract Template](#)
- [GDPR Compliant](#): No personal identifiable data collected.

#### Installations:

- Can be installed by electricians or handymen, remotely supported by FootfallCam specialists. Alternatively, our local partners can carry out the work for you.
- [Accuracy tuning service](#) - complimentary service carried out by FootfallCam.

#### Export data:

- 4x export methods: [Download or Email with Excel or CSV](#), [FTP](#), [PowerBI connectors](#), [custom API](#).

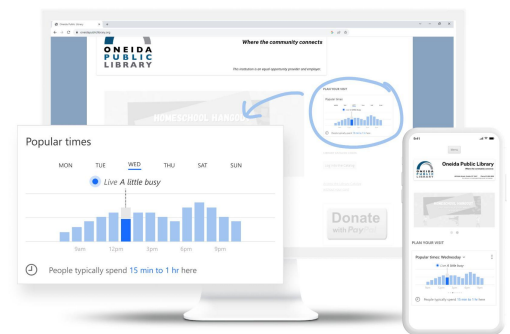
### NEXT STEPS

#### Buying Process:

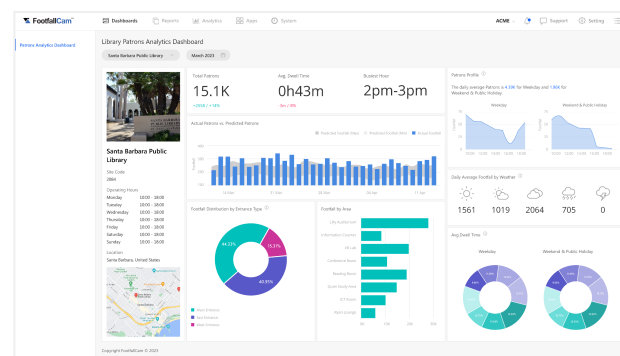
- Buy one unit for the entrance and access to the full functionalities
- Define your Requirements - [Request for Proposal template](#)
- RFQ - [Request for Quotation template](#)
- Ask for quote or buy online



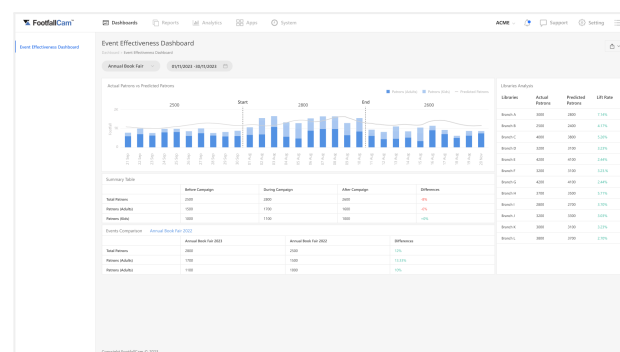
Installed in over 100 small libraries around the world.



[Live Occupancy](#) on your website.

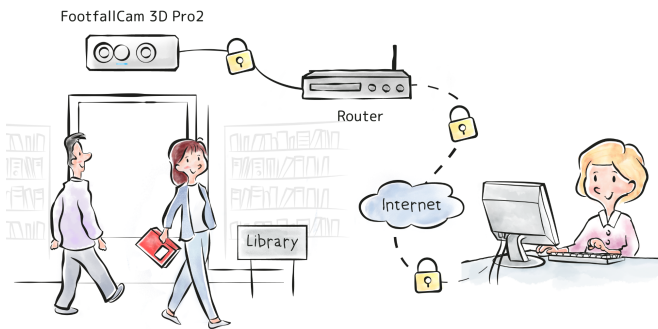


[Patrons Analytics Dashboard](#)

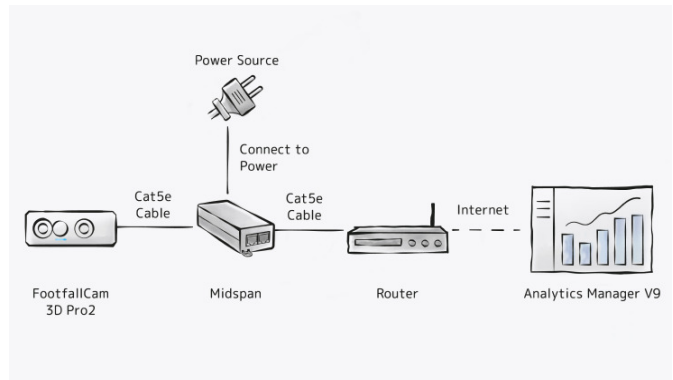


[Event Effectiveness Report](#)

## CONNECTIVITY



How does the people counting system work?



PoE Connection

### Executive Summary

- ✓ FootfallCam Small Library™ is specifically designed for small libraries that are looking for reliable and cost effective people counters.
- ✓ Easy to install, maintenance free.
- ✓ Easy to use, designed for librarians.
- ✓ Full data analytics capabilities.
- ✓ Supported by FootfallCam local resellers.

#### References:

- FootfallCam for Library Powerpoint [Slides](#)
- FootfallCam 3D Pro2 People Counter [Datasheet](#)
- FootfallCam V9 Essential Edition [Datasheet](#)
- FootfallCam 3D Pro2 [Installation Guide](#)
- [GDPR compliance](#)
- [Service Level Agreement \(SLA\)](#)