

FootfallCam

Exclusion Wall Button™

Product Code: FC-FAC15

FootfallCam Product Accessories



The FootfallCam Exclusion Wall Button™ allows users to exclude the counting of staff in their Footfall data. The staff exclusion kit is an additional peripheral attached to the FootfallCam internal chipset.

COMPATIBLE WITH

- FootfallCam 3D Plus™ SE
- FootfallCam 3D Plus™ GPIO
- FootfallCam 3D Max™ GPIO
- FootfallCam 3D Pro2™ GPIO
- FootfallCam 5D Pro™ GPIO

WEIGHT

0.12 kg

MATERIAL

Zinc alloy

RESISTANCES

Waterproof and fireproof

POWER INPUT

DC12 V

SENSOR

Inductive proximity sensor

SIZE

86mm (W) x 13mm (L) x 86 mm (H)

INCLUDED

Screwing Kits

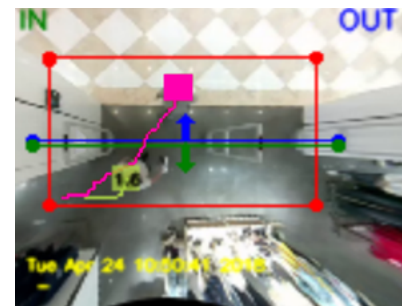
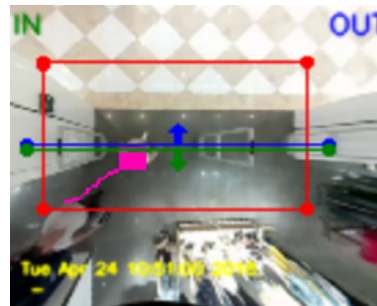
How to Install?

The FootfallCam Exclusion Wall Button™ is an external peripheral that is built into the internal chipset of the FootfallCam people counters. The staff exclusion button will be installed at the entrance side of every doorway to be easily accessible by staff. This kit may be purchased as a supplementary add-on to the compatible FootfallCam devices.

How it works

Step 1 Staff will press the staff exclusion sensor

Step 2 The staff will automatically be marked with a pink blob to indicate as a staff

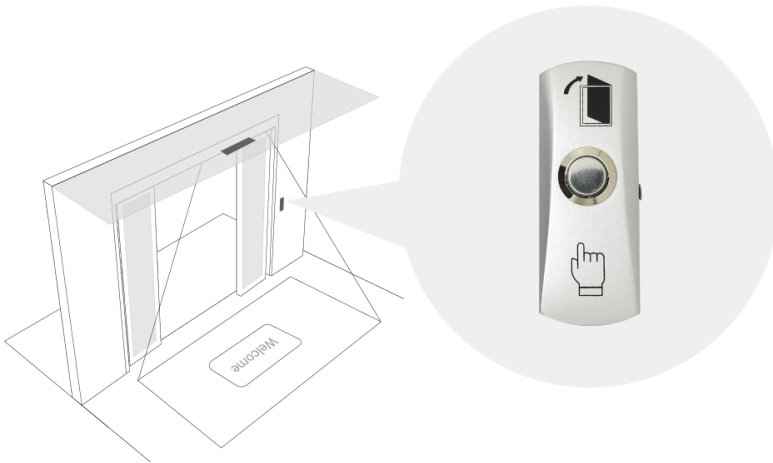


Step 3 The staff can proceed to walking through the entrance as normal



Wiring Connection Guideline for Installation

FootfallCam Exclusion Wall Button™ is mounted vertically on a wall beside the FootfallCam people counter, it **MUST** be on the same entrance, and connect wires with the counter. The ideal mounting height of FootfallCam Exclusion Wall Button™ is around 1.5 metre from the ground.

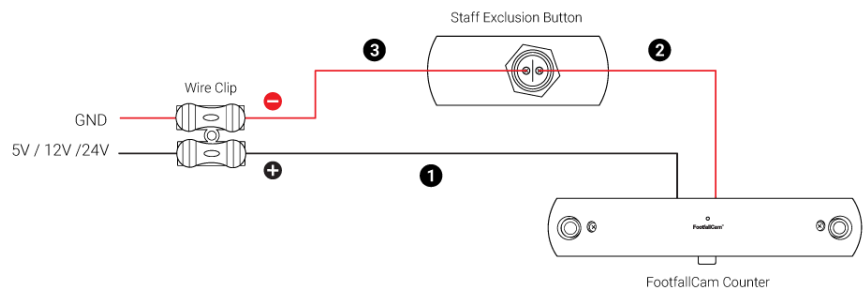


Connect to FootfallCam 3D Plus™ SE, FootfallCam 3D Plus™ GPIO and FootfallCam 3D Max™ GPIO

Step 1 Connect the **Red** wire from FootfallCam Device to a positive voltage (5V, 12V or 24V).

Step 2 Connect the **Black** wire to the button.

Step 3 Connect the other wire from the button to **Ground (GND)**.



Connect to FootfallCam 3D Pro2™ GPIO & FootfallCam 5D Pro™ GPIO

Step 1 Connect the HDMI Terminal Adapter to the FootfallCam Device.

Step 2 Connect the **Red** wire to a positive voltage (5V, 12V or 24V).

Step 3 Connect the **Red** wire to the **Pin4** of the HDMI Terminal Adapter.

Step 4 Connect the **Pin3** for HDMI Terminal Adapter to the button.

Step 5 Connect the other wire from the button to **Ground (GND)**.

