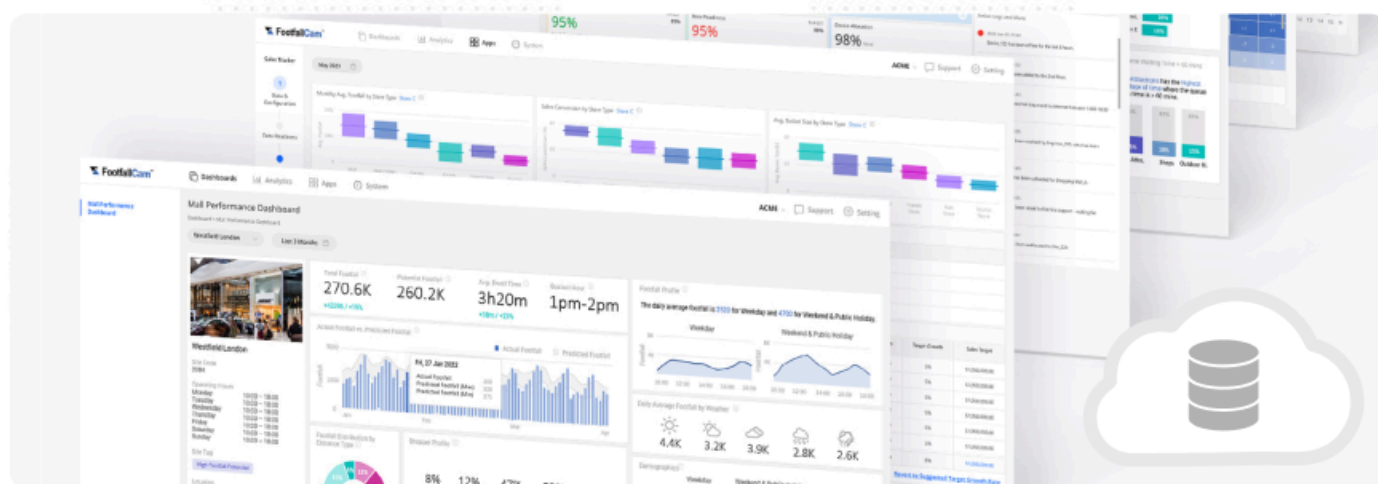


Visitor Management Software

FootfallCam V9™



What is FootfallCam V9?

FootfallCam V9 is a visitor management software designed to collect, analyse, and visualise people counting data, providing meaningful business intelligence and empowering businesses with actionable insights for informed decision-making.

Key Features

FOOTFALLCAM V9 DEVICEHUB

- **Health Check:** Monitor the status of FootfallCam devices and other 3rd party IoT devices.
- **Device Configurations:** Define the parameters of the devices and their associated area definitions.

FOOTFALLCAM V9 DATAMART

- **3rd Party Data Sources:** Weather, Holidays, Stock Price, Population Map, House Price
- **Customer data:** Secure data stores for Sales data, Site information, Staff Rosters, Promotion Events

FOOTFALLCAM V9 DATAFLOW

- **Rule Engine:** Create business rules, alerts and thresholds that caters for different business needs
- **Customised metrics aggregation:** customised ingestion rules to custom data types
- **Customised dashboard:** easy to use web-based report builder

FOOTFALLCAM V9 ACCOUNT MANAGER

- **Role-based User Access Control:** Ensures that users have appropriate permissions based on their roles.
- **Billing System:** Simplifies the billing process for franchisees and businesses with multiple business units.
- **Single Sign-On (SSO):** Streamlines access to multiple systems including FootfallCam system with a single set of login credentials

FOOTFALLCAM V9 DATASET

- **Data Storage** - Minutes, Hourly historical FootfallCam device data.
- **Metrics Definitions** - Over 500 business ready metrics.
- **Data Prep Module** - Data Cleansing, to ensure business grade data integrity.

FOOTFALLCAM V9 APPS

- **18 applications:** Industry best practices, proven with quantifiable business benefits. Customisable based on customer's requirements
- **Built-in AI models:** Business ready AI models, can be retrained with customer's own data.

FOOTFALLCAM V9 REPORT CENTRE

- **Report Templates:** Provides 60+ customisable dashboard and report templates for a wide range of industries including retail, offices, libraries, museums, and more.
- **Automated email scheduler:** Configure the set of reports to be sent to key stakeholders automatically

FOOTFALLCAM V9 ANALYTICS CENTRE

- **Pivot Grid:** "Slice and dice" of data, compile reports to address to a specific business question
- **Predictive Analysis:** Using Big Data and AI algorithms to predict the likely outcome of a future event
- **AI Analytics Workspace:** With the options to choose AI model for targeted data modelling

Do you need further information or have a question? Please visit www.footfallcam.com

©2002-2024 Footfall counter is a trademark application of FootfallCam in various jurisdictions. We reserve the right to introduce modifications without notice. All other company names and products are trademarks of their respective companies.

Integration Methods

FOOTFALLCAM V9 PowerBI CONNECTOR

- Ready made PowerBI connector, enables the automated import of data from V9 to PowerBI.

FOOTFALLCAM V9 CLIENT DATA MANAGER

- An open-source software that helps you to automate the retrieval of data from V9 cloud to your server's databases.

KEY SPECIFICATION

Compatible Browser	Mozilla Firefox or Later Chrome Version 4.0 or Later Safari
User Level	Multiple user group hierarchy based on user configuration
Time	NTP, Adjustable time zone, automatic daylight saving adjustments
Data Delivery	TCP/IP
Database Type	Microsoft SQL/ Maria DB/ Druid / Postgres
Report Format	.csv, .xml, .txt, .pdf
Data Storage	5 Years of storage with auto sync
Data Backup	Yes
Backup Frequency	Daily Full Backup for Data and Configuration File Weekly Backup to Sub Server for Contingency Purposes
Software Update	Auto upgrade

MINIMUM SERVER REQUIREMENT (PRIMARY SERVER) **

Operation System	Window Server 2016 or above
Storage	500GB to 2TB support up to 2000 Devices *
Processor	3.5 GHz (64-bit Processor) with 16 Cores *
Physical Memory	From 32 GB up to 128 GB *
Networking	100Mb Ethernet Connection or above
Web Server	Internet Information System (IIS) 7.0 and above
Microsoft.NET Framework Version	4.0 and above
Database	MS SQL Server 2016 or above

MINIMUM SERVER REQUIREMENT (SECONDARY SERVER) **

Operation System	Ubuntu Server 20.04 (LTS) or above
Storage	1TB to 3TB support up to 2000 Devices *
Processor	3.5 GHz (64-bit Processor) with 16 Cores *
Physical Memory	From 64 GB up to 256 GB *
Networking	100Mb Ethernet Connection or above
Database	MySQL Server

* For Type-A, Large Configuration. For more info about the server(s) hardware requirements, please visit [On Premise Hosting \(https://www.footfallcam.com/people-counting/knowledge-base/chapter-26-hosting-solution-on-on-premise-server/\)](https://www.footfallcam.com/people-counting/knowledge-base/chapter-26-hosting-solution-on-on-premise-server/).

** Both servers are mandatory to enable all features included in FootfallCam Analytic Manager V9.

FOOTFALLCAM V9™ SERVER OPTIONS

	FootfallCam V9 Cloud	FootfallCam V9 On-Prem
Descriptions	Software and data stored at the FootfallCam hosted server. The retailer is able to access via web browser with a secured password or login account.	Software and data are stored at the retailer's own corporate server. The retailer will be given full access to the software which has the same function as cloud-based software.
Software Core Feature		
Max Number of Devices	Unlimited	Support up to 2000 devices with 2TB storage **
Analytics and Reports	Yes	Yes
Email Scheduler	Yes	Yes
Compare data by store, by time and by different metrics	Yes	Yes
Custom Dashboard created by user	Yes	Yes
User Account Management	Yes	Yes
Health Check Reports	Yes	Yes
Accuracy Audit Function	Yes	Yes
Sales Data/ POS Integration	Yes	Yes
Data Export in .csv, pdf, .txt and excel format	Yes	Yes
Counter and Branch Management	Yes	Yes
Multi Language	Yes	Yes
Remote Access to the counter	Yes	Yes, provided the device is within the same network
Firmware Upgrade	Automate	Automate, however customer able to control the quantity upgrade per day
Software upgrade	Automate	Automate
Backup and Security Protection		
Data backup	Automate daily backup in cloud server	Backup function available for retailer to set up your own backup
Configuration setting backup	Automate daily backup in cloud server and client's server	Automate daily backup
Contingency backup	Weekly backup to sub server	Not Available
Data Protection	Yes	Yes