

FootfallCam Staff Exclusion Wall Mounted Button™

Product Code: FC-FAC15

FootfallCam Product

Accessories



The FootfallCam Staff Exclusion Wall Mounted Button™ allow users to exclude the counting of staff in their Footfall data. The staff exclusion kit is an additional peripheral attached to the FootfallCam internal chipset.

COMPATIBLE WITH

FootfallCam 3D Plus™ SE
FootfallCam 3D Plus™ GPIO
FootfallCam 3D Max™ GPIO

WEIGHT

0.12 kg

MATERIAL

Plexiglass

RESISTANCES

Waterproof and fire proof

POWER OUTPUT

DC12 V

SENSOR

Inductive proximity sensor

SIZE

86mm (W) x 13mm (L) x 86 mm (H)

INCLUDED

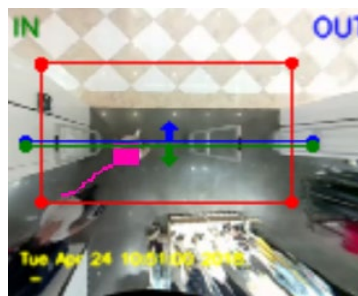
Screwing Kits

How to install?

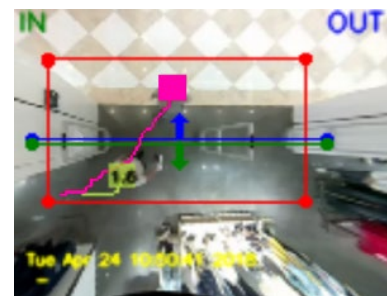
The FootfallCam Staff Exclusion Wall Mounted Button™ is an external peripheral that is built in to the internal chipset of the FootfallCam 3D Plus™ SE. The staff exclusion button will be installed at the entrance side of every door way to be easily accessible by staff. This kit may be purchased as a supplementary add on to the FootfallCam 3D Plus™ SE.

How does it work?

Step 1 Staff will press the staff exclusion sensor



Step 2 The staff will automatically be marked with a pink blob to indicate as a staff



Step 3 The staff can proceed to walking through the entrance as normal

